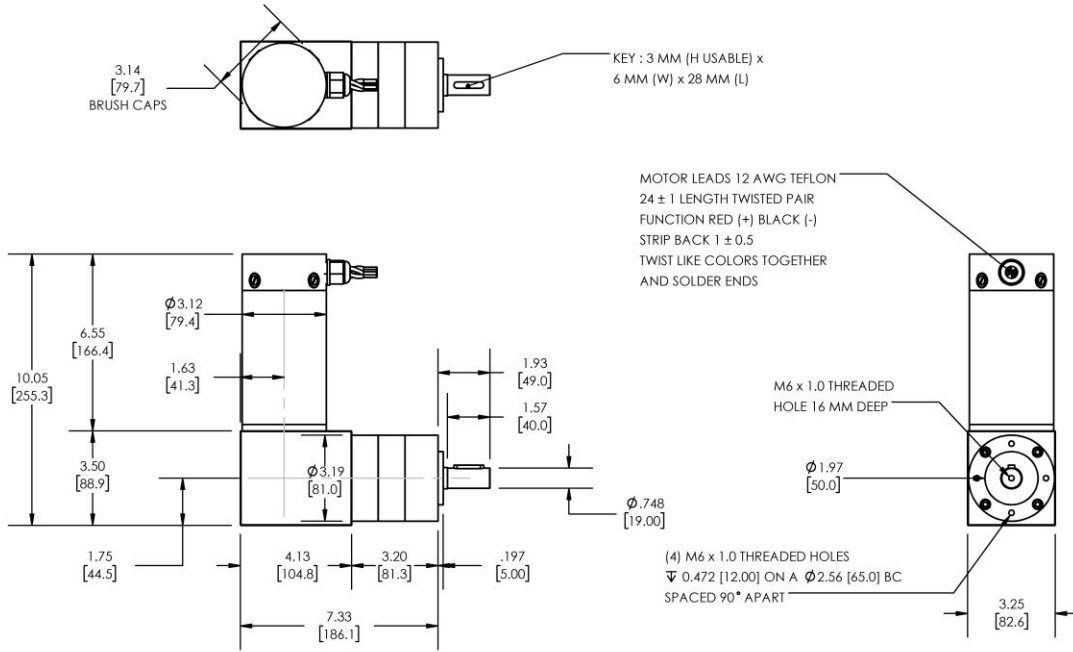


Model Number:

MMP D33-655A-12V GRA81-029



PLANETARY GEARMOTOR OUTPUT PARAMETERS:	VALUE	UNITS	TOLERANCE
Gearhead Ratio (exact)	28.93 : 1		
Gearhead Shaft Output Speed (at full-load)	94	RPM	MAX
Gearmotor Rated Continuous Torque	123	In-Lbs	MAX
Gearmotor Rated Peak Torque	399++	In-Lbs	----
Gearhead Standard Backlash	33	Arc Minutes	MAX
Gearhead Efficiency	75%	----	----
Output Shaft Radial Load Capacity	135	Lbs	MAX
Output Shaft Axial Load Capacity	27	Lbs	MAX
Gearmotor Total Weight	17	Lbs	MAX

++ All Peak Torque values are dependent upon duty. Contact our sales office for details.

DC MOTOR PERFORMANCE PARAMETERS:	VALUE	UNITS	TOLERANCE
Rated DC Voltage	12	DC VOLTS	----
Rated Continuous Current	22.1	AMPERES	----
No-Load Speed	3529	RPM	MAX
Rated Speed	2716	RPM	+/- 15%
Rated Continuous Power Out	183	WATTS	+/- 15%
Rated Continuous Torque	91	OZ-IN	----
Peak Torque (motor only)	294	OZ-IN	----
No-Load Current	2.35	AMPERES	MAX
Back EMF Constant (Ke)	3.4	V/KRPM	+/- 10%
Torque Constant (Kt)	4.6	OZ-IN/AMP	+/- 10%
DC Armature Resistance	0.12	OHMS	+/- 15%
Armature Inductance	0.05	mH	+/- 15%
Armature temperature	155	DEG. C	MAX

NOTES:

- ENCODER & BRAKE OPTIONS AVAILABLE – [FOLLOW THIS LINK FOR DETAILS](#)
- NEMA MOUNTING FLANGE OPTION AVAILABLE – [FOLLOW THIS LINK FOR DETAILS](#)